

Florida Participation in the National Wetland Condition Assessment

Carrie Boyd¹, Erica Hernandez¹, Kelly Chinnners-Reiss¹, Mark T. Brown¹
HT Odum Center for Wetlands, University of Florida, Gainesville, FL, USA

National Wetland Condition Assessment (NWCA)

- NWCA Site Assessment
 - FDEP
 - Graduate Research
- FL Sites
 - Statewide Distribution
 - Sampling Design
- Overalls for FL Wetlands
 - USA-RAM method
- Future Research



NWCA

Site Verification and AA Establishment
Site Photographs
Veg Plot Layout and Characterization (5)
USA-RAM
QA/QC and Unknown Collection

AA Team

Buffer Plot Layout and Characterization (12)
Hydrologic Characterization
Water Quality Characterization
Algal Toxins and Algae Taxonomy
Chlorophyll
Soil Pesticides
Soil Pit Layout, Characterization, Sampling
Soil Enzyme and Isotope Sampling

AB Team

FDEP

YSI Sampling
Water Sample Collection

Did we mention the ice?!!

Graduate Research

Establish Long-Term Sensors
Collect Macro-Invertebrates

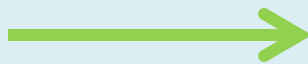
Site Evaluation

Potential Sites



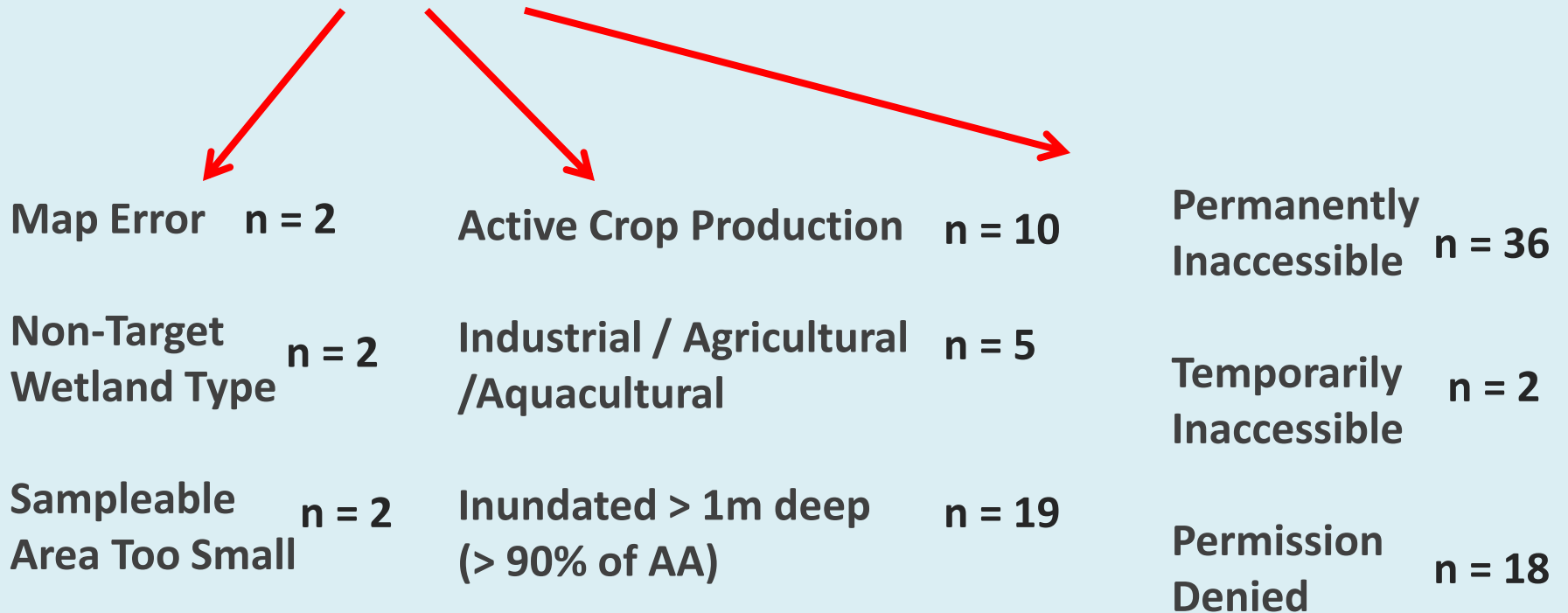
Evaluated Sites

n = 164



Sampled Sites

n = 67



Site Distribution and Access

Regions of Florida

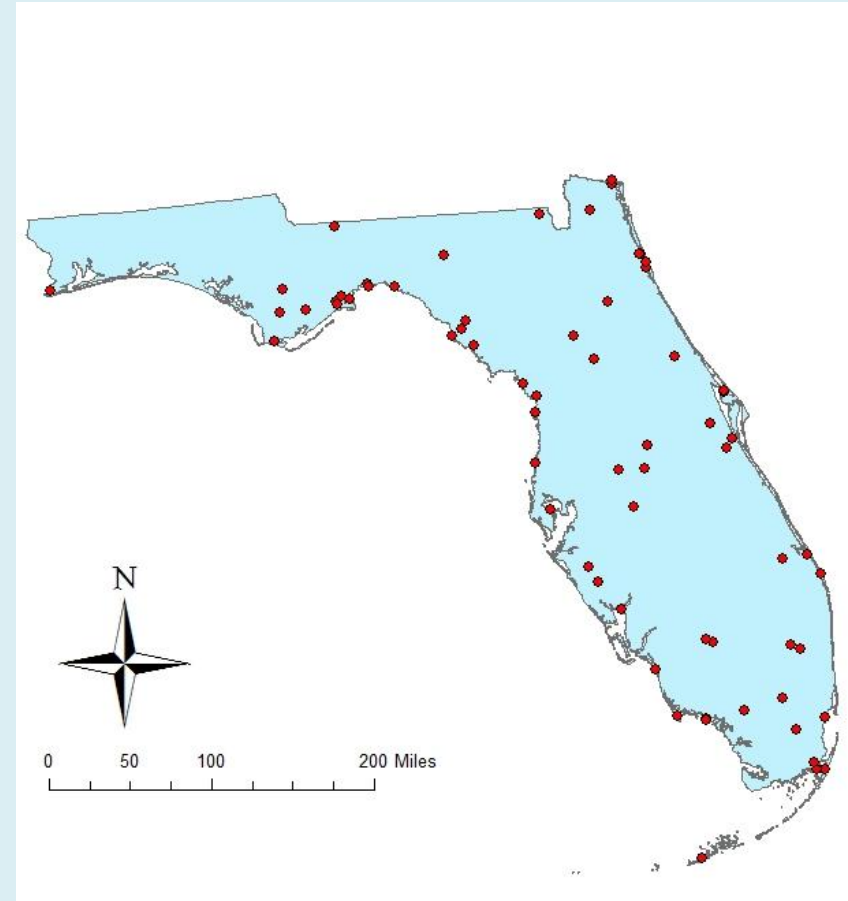
Wetland Region	Wetland Points (n)	Total
		% of Wetland Points
South	23	33
Central	14	20
North	18	26
Panhandle	14	20
Total	69	

(regions after Lane 2000)

Wetland Type

Wetland Class	Wetland Points (n)	Total
		% of Wetland Points
E2EM	18	26
E2SS	13	19
PEM	17	25
PSS	13	19
PFO	8	12
Total	69	

(Cowardin et al 1979)



Transportation Logistics

65% by foot (n = 45)

20% by motorboat (n = 14)

10% by canoe (n = 10)

4% by airboat (n = 3)

USA – RAM – Level 2 Assessment

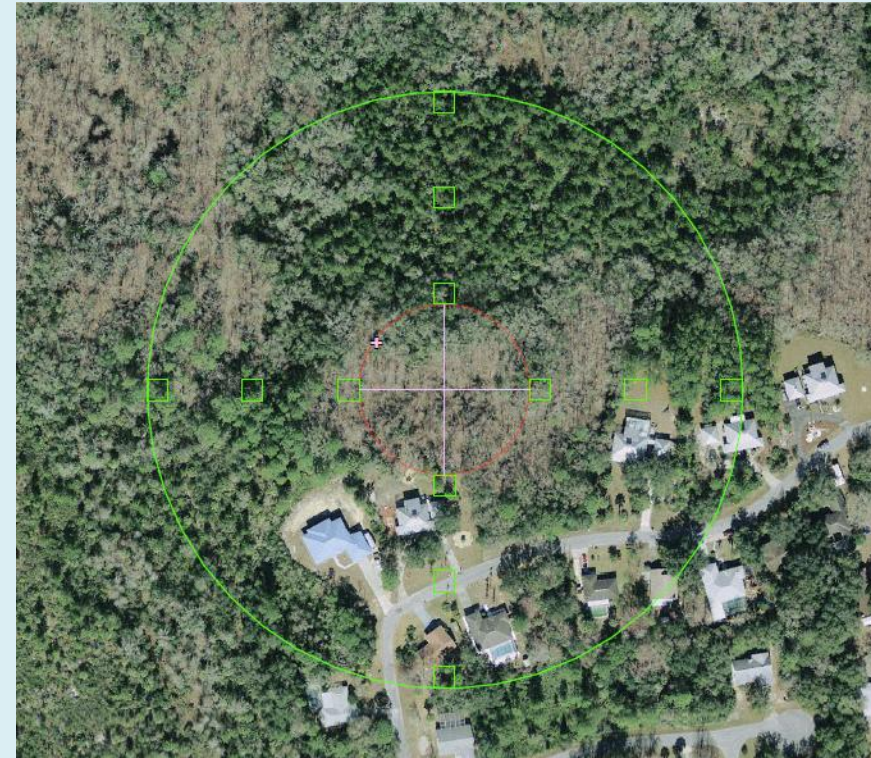
- Rapid → Across Classes
- Overall Site Condition
- State Adaptation
- Metrics

Buffer (1-3)

- % Adjoining Buffer
- Buffer Width
- Stressors
 - Hydro
 - Res/Urb/Com
 - Hab/Veg
 - Agric.

AA (4-11)

- Topo Complexity
- Patch Mosaic
- Vert. Complexity
- Plant Community Complexity
- Water Quality
- Hydro Alteration
- Substrate Alteration
- Cover of Invasives
- Veg Stressors



0 70 140 280 Meters



NWCA11-1325 - Shifted Circular AA
Point = 28.923066 N -82.621731 W
Plot Center = 28.922829 N -82.621438 W

PFO

USA – RAM – Level 2 Assessment

Landscape Stressors

- Metric 1 (100%)

>75 → 90.77% (59)

50-75 → 6.15% (4)

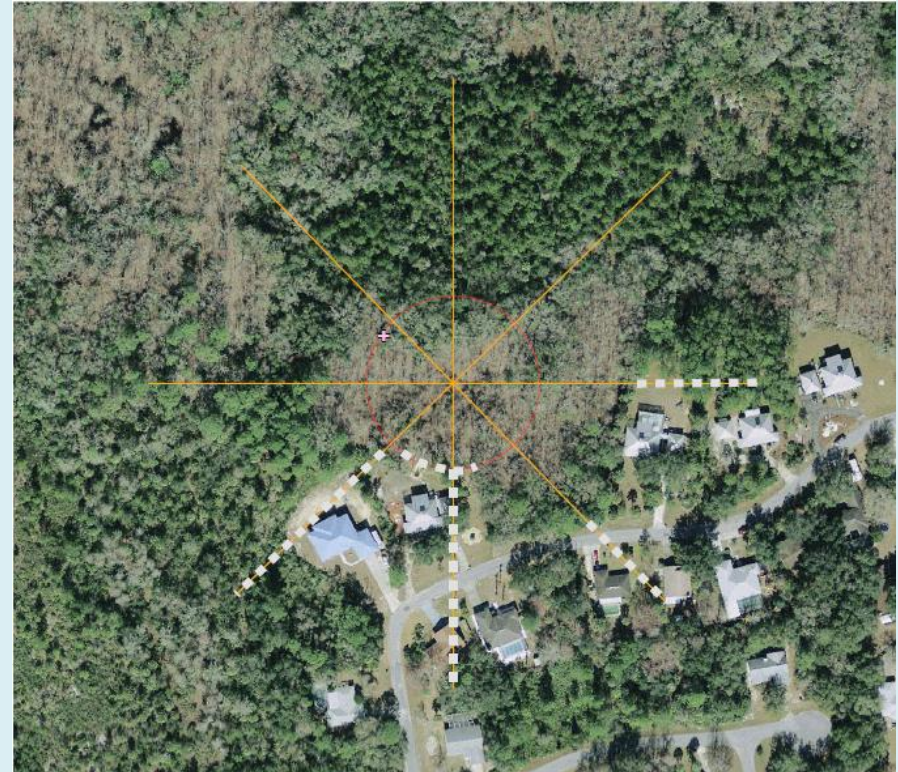
25-50 → 1.54% (1)

< 25 → 1.54% (1)

- Metric 2 (800m)

693.18 ± 182.42 m (mean ± SD) (n=65)

<u>Region</u>	<u>M</u>	<u>Mean ± SE</u>
North	767.17	92.21 ± 146.87
South	757.22	350.22 ± 281.15
Central	746.30	463.46 ± 349.14
Panhandle	686.78	365.00 ± 480.11
PUB/PAB	598.75	± 111.55
PSS	480.46	± 86.92



0 40 80 160 Meters



NWCA11-1325 - Shifted Circular AA
 Point = 28.923066 N -82.621731 W
 Plot Center = 28.922829 N -82.621438 W

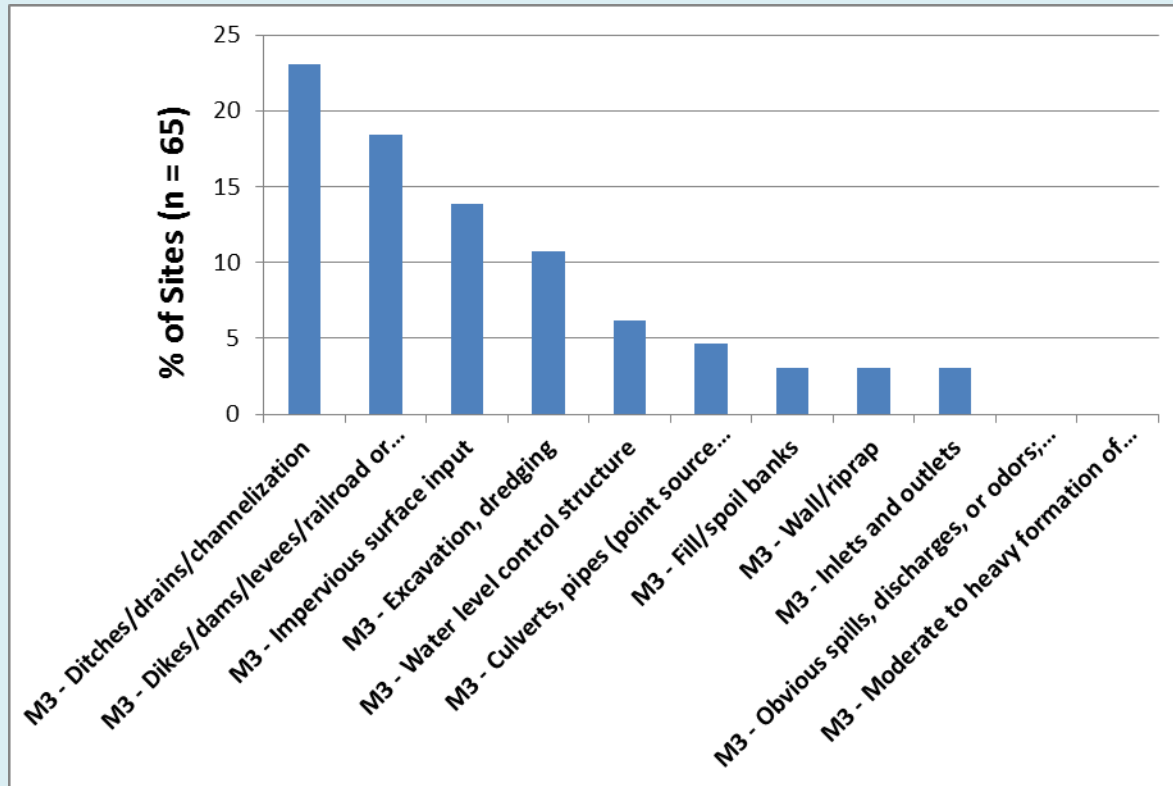
PFO

USA-Ram - - Metric 1
 >75% of AA perimeter
 adjoining buffer

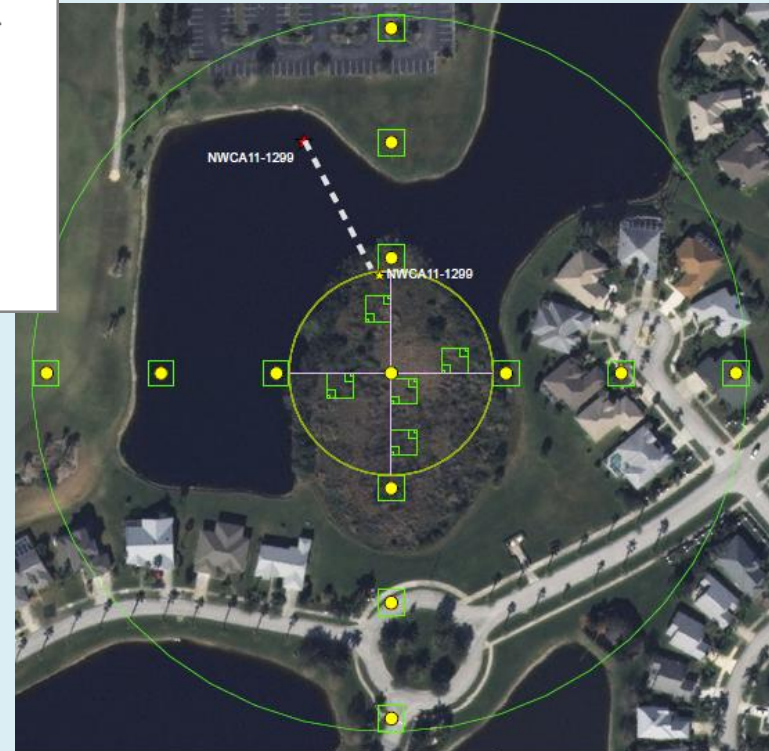
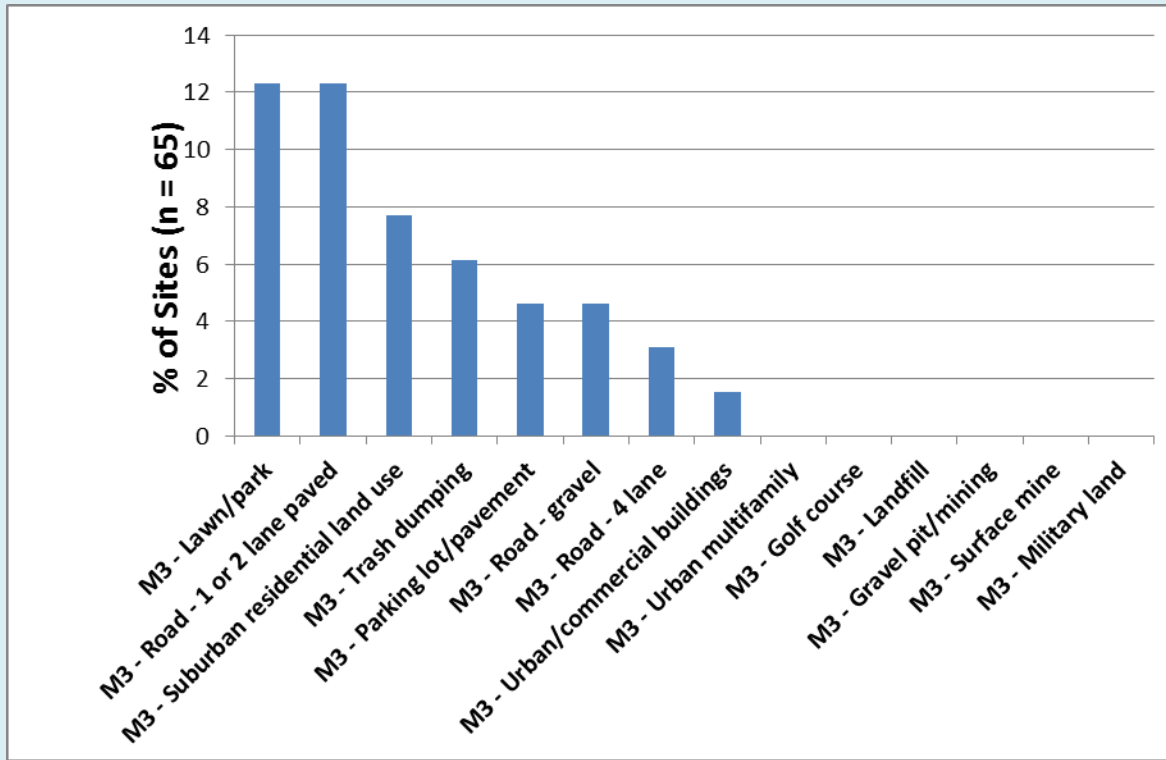
Metric 2
 Transect - - Buffer Width (m)
 1-N - - 100
 2-NE - - 100
 3-E - - 45
 4-SE - - 50
 5-S - - 0
 6-SW - - 5
 7-W - - 100
 8-NW - - 100

USA – RAM – Level 2 Assessment

Hydrologic Stressors



USA – RAM – Level 2 Assessment Residential / Urban / Agricultural Stressors



USA – RAM – Level 2 Assessment

More Overalls

- Point Source (2)

Point Source Input → 1.53% (1)

Stormwater Inputs → 4.62% (3)

- Sedimentation/
Pollutants (4)

Sedimentation (deposit/fan/plume) → 3.08% (2)

Debris lines (plants) or Silt-laden Veg → 1.53% (1)

Turbidity in Water Column → 1.53% (1)

Industrial/Domestic Spills or Discharge → 0%

- Eutrophication/
Mining/Salinity (7)

Formation of Heavy Algal Surface Mats
(or Lemna sp.) → 1.53% (1)

**Obvious Increases in Concentration of Dissolved Salts →
4.62% (3)**

Direct Discharges (Domestic / Agricultural / Dairy /
Mining)

USA – RAM – Level 2 Assessment Overall Habitat / Vegetation Stressor

Buffer →

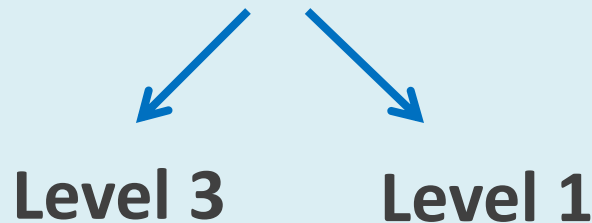
Substrate Disturbance → 21.54% (14)

Mowing/Shrub Cutting → 12.31% (8)

Cover of Non-native / Invasive Sp. → 12.31% (8)

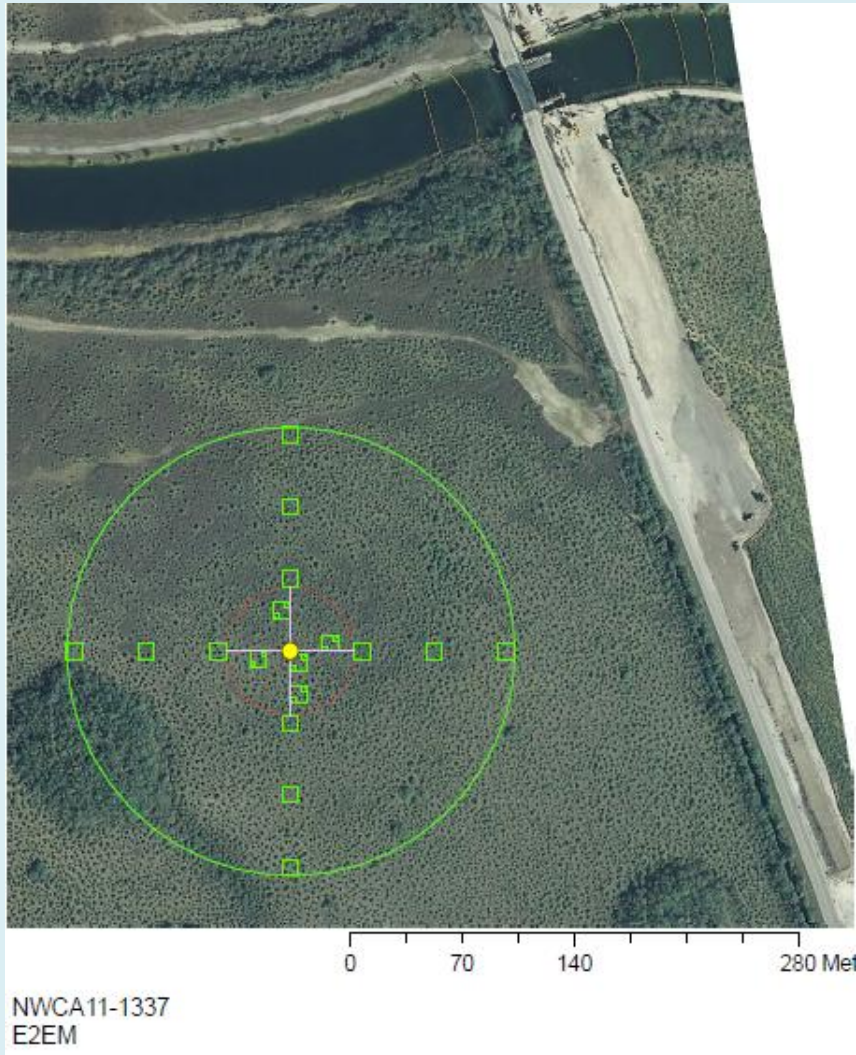
- **Other Metrics of Veg on USA-RAM**

- Topographic Complexity (20)
- Patch Mosaic – 4 options
- Vertical Complexity - % cover classes for 7 strata
- Plant Community - Dominant/Co sp., % cover, 7 strata, invasives
- Cover of Invasive Species – 5 cover classes

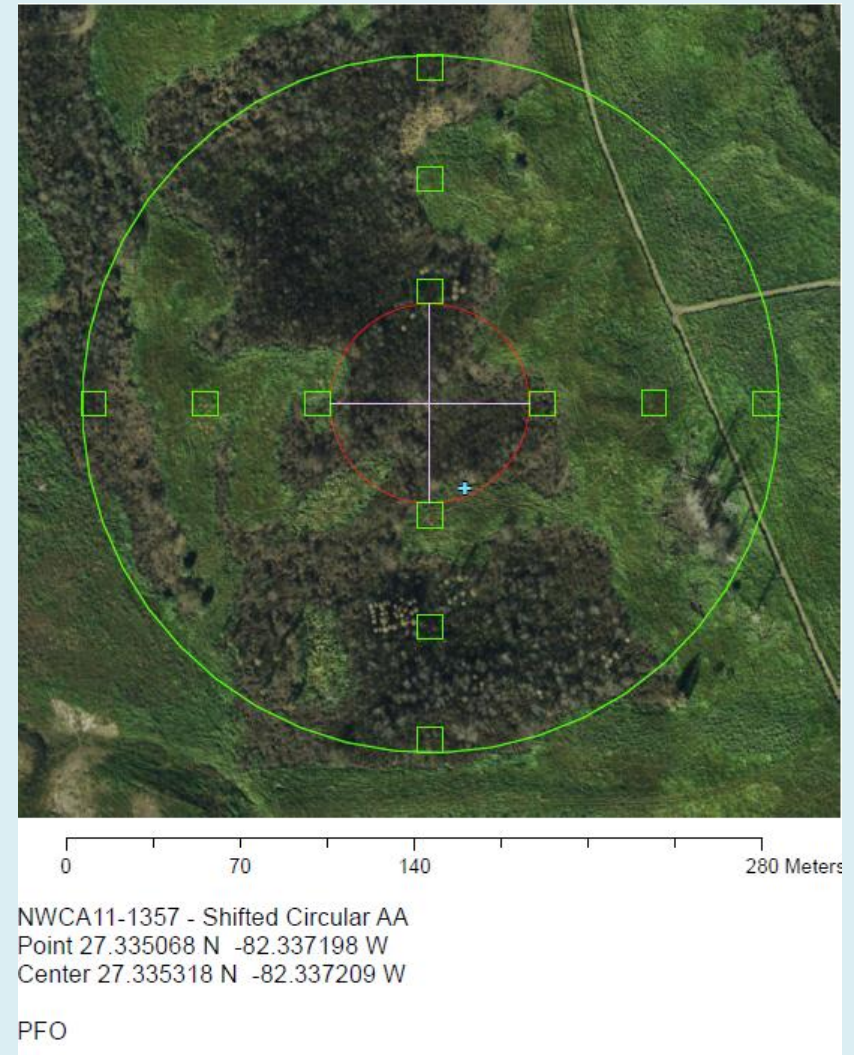


USA – RAM – Level 2 Assessment

Other Thoughts – Spatial / Temporal Scale



Navy Base – Key West, FL



**Phosphate Mining – Central Florida
Restored / Natural Wetland**

NWCA and Florida

- This is IMPORTANT.
- This is INTENSE.
- This should be REPEATED.
- This is GREAT DATA.



Acknowledgements

- Environmental Protection Agency
- Florida Department of Environmental Protection (FDEP)
- University of Florida and the Department of Environmental Engineering
- H. T. Odum Center for Wetlands
 - P.I. Dr. Mark T. Brown
 - Co-P.I. Dr. Kelly Reiss
 - Co-Leader Erica Hernandez
 - FLORIDA FIELD CREW!!!



Questions

